

SYNERGY

PARTNERS



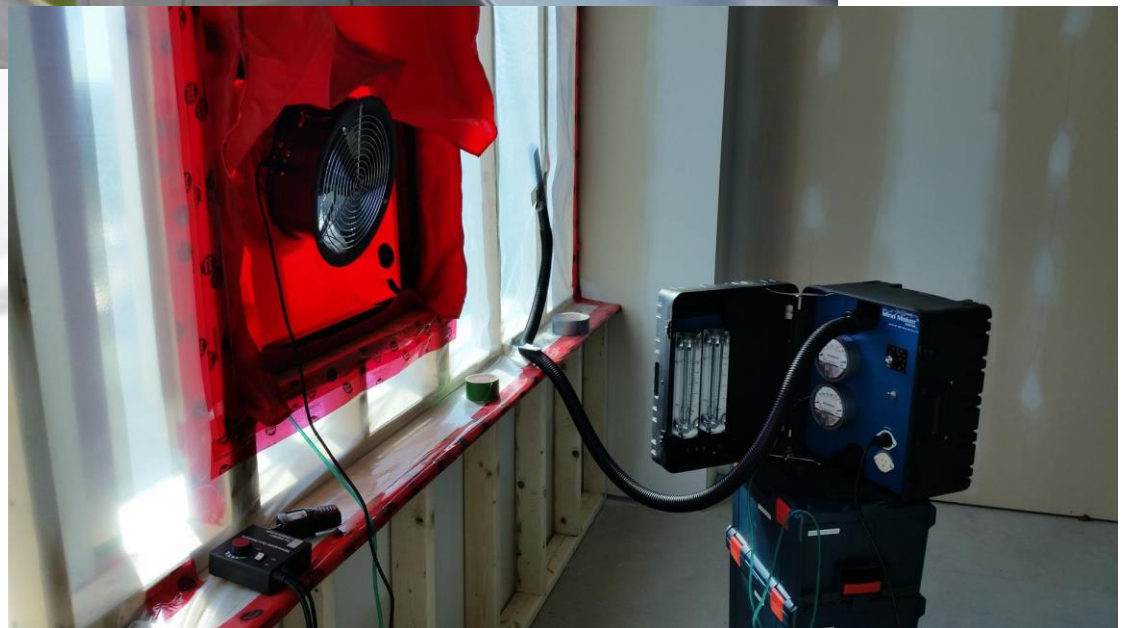
30 Hector Gate Dartmouth, NS Curtain Wall Repairs

Centrecorp Management & CREIT

A curtain wall water leakage evaluation was completed on this 5-storey commercial office building. The walls are clad with an ANOTEC 3400HP Series stick-built curtain wall system and are glazed with insulating glass units (at vision areas) and insulated backpans and aluminum composite material (ACM) panels at spandrel locations.



The evaluation included a review of the architectural drawings, curtain wall shop drawings, ACM panel shop drawings, curtain wall design specifications, and ACM design specifications and a visual review of the curtain wall system on the southeast, northeast, and north elevations via boom truck.



A review of disassembled curtain wall components and ACM spandrel panels was completed at targeted locations on three elevations to review concealed detailing and conditions. Synergy developed repair specifications, reviewed repair work, and completed water testing to check repair effectiveness.
